



# understanding and improving value for money

## How we can help you

### Value for Money Statistical Review

The Use of Resources Key line of enquiry (KLOE) 1.2 requires your council to demonstrate a sound understanding of costs and performance and to show it is achieving efficiencies in its activities. In addition new KLOE 2.2 also requires your council to produce relevant and reliable data and information to support decision making and manage performance.

Your authority may already have the foundations of good value for money and use of resources but how do you demonstrate this? A comprehensive and detailed statistical analysis of your organisation against its comparators is an essential starting point in demonstrating you are working towards excellence in these areas. CIPFA are ideally placed to assist you in evidencing this.

Each year CIPFA undertakes more than forty statistical surveys of local authority operations, capturing information on a wide variety of local authority activities. CIPFAstats is the leading, independent source of comprehensive data about local government service and have been collecting and publishing information for over a century.

**'Use other sources of information, such as that held by CIPFA, to develop an understanding of unit costs, support your analysis and explain significant variations in your costs.'**

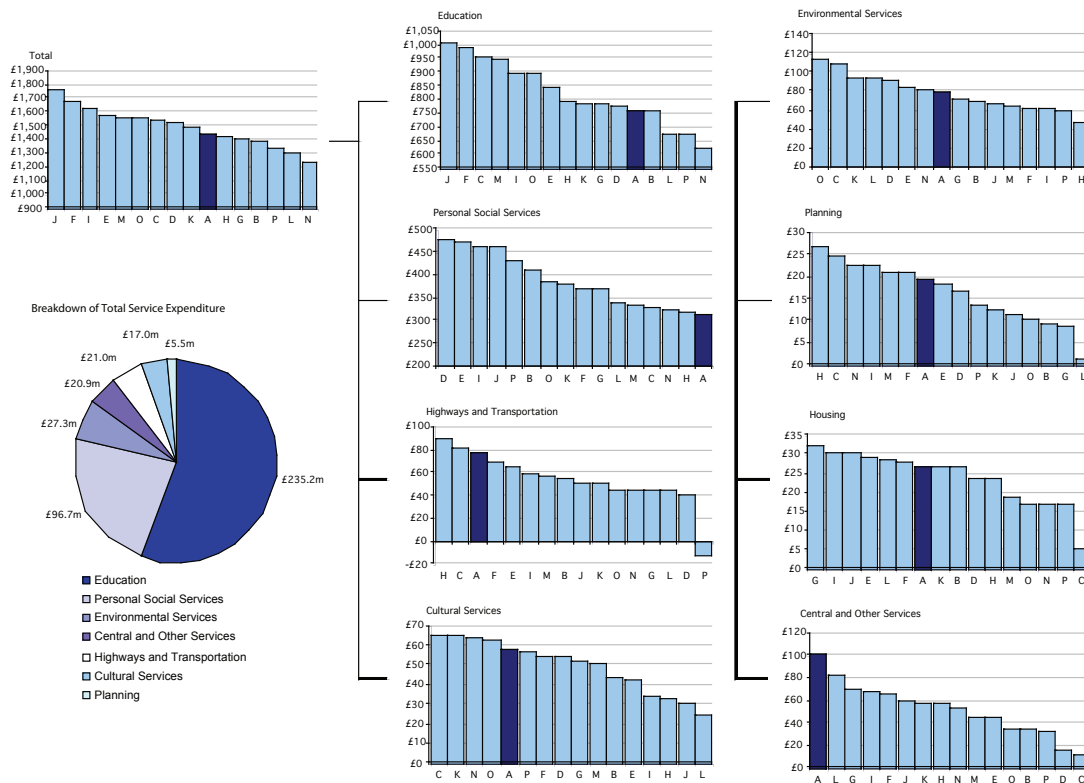
**Audit Commission Use of Resources Guidance for Councils**

CIPFA has unrivalled access to local authority data and can draw on this expertise to help you evidence that your council is delivering good value for money.

### Why undertake a CIPFA review?

- Makes use of most recently available data from CIPFA, CLG and other central government departments.
- Much more comprehensive and in depth than Audit Commission VfM profiles.
- Individually tailored reports written specifically for your authority, with input from key personnel welcomed.
- Compares to a range of comparator groups - nearest neighbours, class of authority, plus one or more of your own selected group(s).
- Templates and groups can be refined to provide a better fit to your authority's requirements.
- Identifies areas of concern, where costs may be comparatively higher, or performance comparatively lower than average.

## Total Service Expenditure per head of population



'The CIPFA statistical database and research capability have provided an excellent resource to challenge our cost base, prioritise our budgets more effectively and improve our value for money.'

Mike Weaver, Worcestershire County Council

Value for Money is about demonstrating that you can deliver good performance and outcomes at the lowest possible cost and with high customer satisfaction. It is no longer sufficient to say that you do this, it is essential to demonstrate it with solid data related evidence. More than ever, it is essential to take a structured approach to achieving consistently good Value for Money.

CIPFA is your ideal partner. We know public services inside out. We can help you implement the right solutions for you and your organisation. The CIPFA Group work with over 2000 public service organisations providing first class information, analysis, advice and practical support to achieve organisational goals.

Our analysis of cost and performance across the public sector is unrivalled. We have studied the behaviour of VfM high flyers and also the key risk factors. We have proven approaches to the strategic and operational challenges that you will face.

Contact us to find out how we can work with you to understand and improve your VfM.

'Authorities (should) use the more extensive CIPFA data which is available'

Lifting the Burdens Taskforce Final Report

## Enhance your value for money (VfM)

CIPFA can also help you develop and achieve VfM through:

### Business Improvement Workshops

Embed VfM in your business cycle and service review processes. Establish ownership at every level by demonstrating VfM to your stakeholders through CIPFA tailored workshops. We can advise you on ways to communicate your achievements, and help you to use simple but effective tools. Whatever your requirements, CIPFA's experienced team can help. See [www.ipf.com/consultancy](http://www.ipf.com/consultancy) for details.

'Harrow Council worked with CIPFA at a critical time in developing our approach to VfM. The results of the project gave us an innovative framework for understanding VfM and a comprehensive set of well documented benchmarking data to support the conclusions.'

Tom Whiting, London Borough of Harrow

To learn more about our VfM statistical reviews or other ways we can help you please get in touch:

Richard Ludlow  
Business Development, CIPFA  
T 020 8667 8544  
E [richard.ludlow@cipfa.org.uk](mailto:richard.ludlow@cipfa.org.uk)  
[www.cipfastats.net](http://www.cipfastats.net)