

The NHS and Regeneration

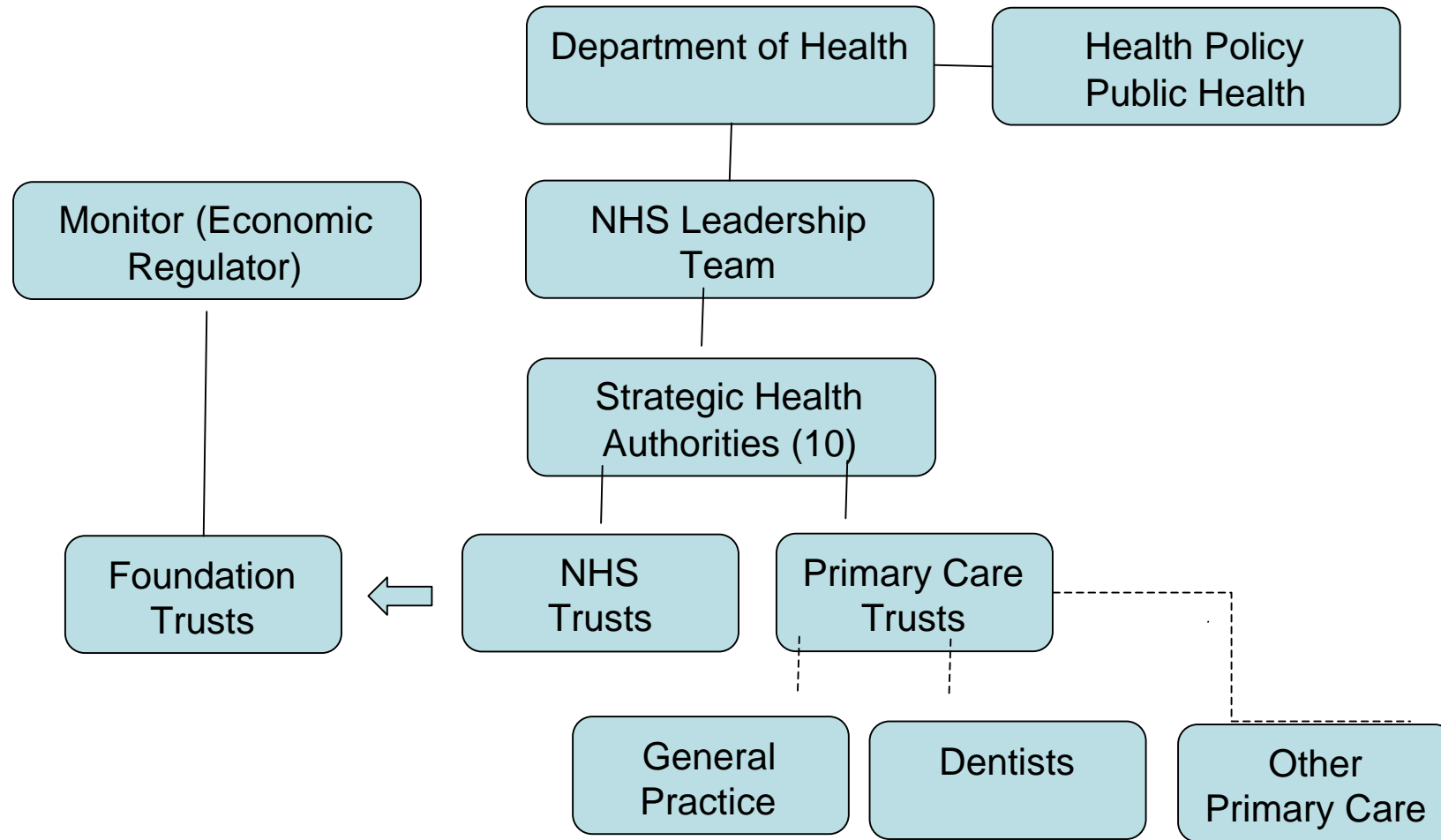
Julie Moore – CEO University Hospital Birmingham NHS FT

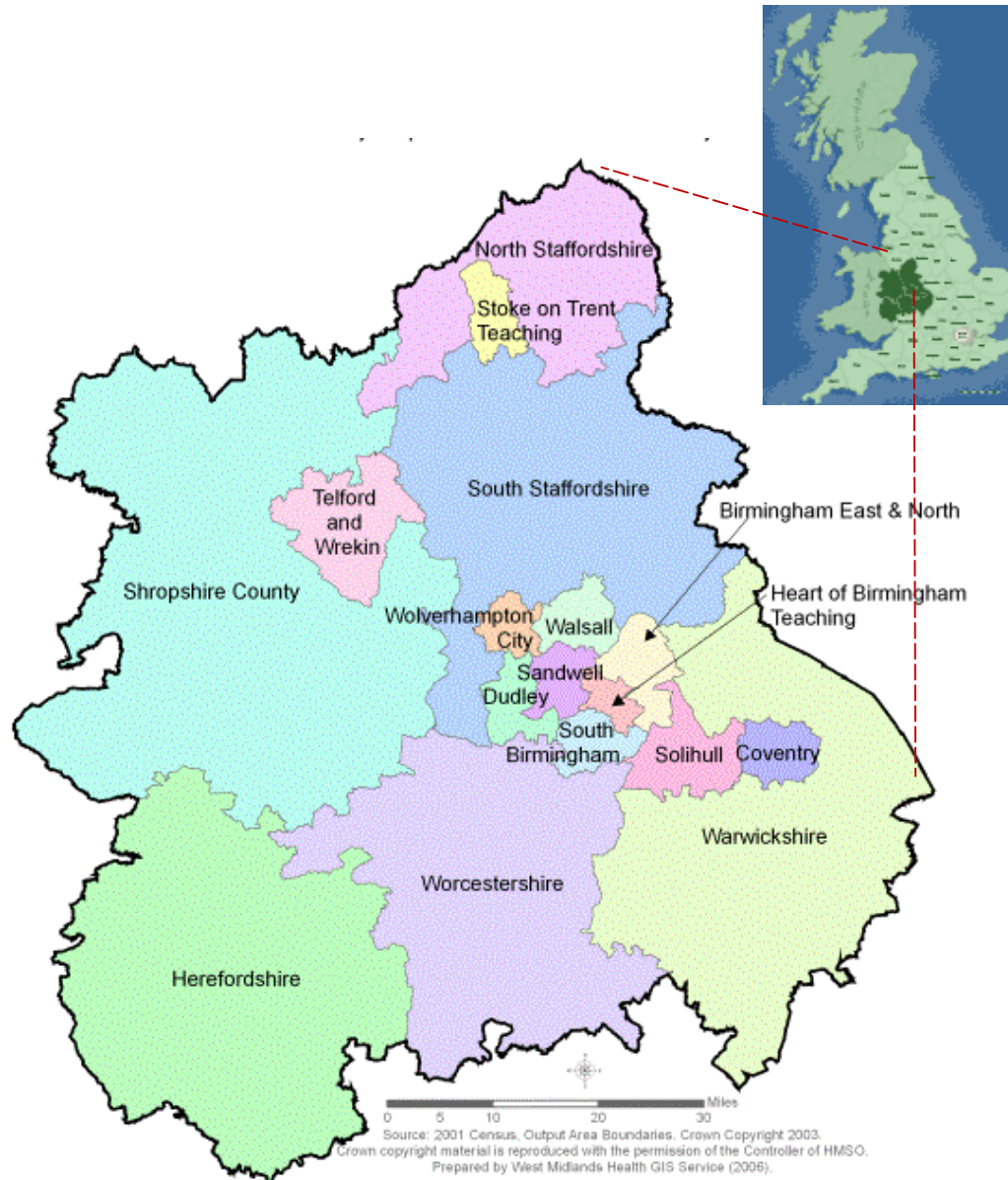
Peter Shanahan – Interim CEO NHS West Midlands

Agenda

1. Overview of the NHS in the West Midlands
2. A Regional Perspective
3. University Hospital Birmingham's Role
4. Questions & Discussion

The Structure of the NHS





- 44 NHS organisations
- 19 Acute Hospitals
- 6 Mental Health Organisations
- 17 Primary Care Trusts
- 1 Ambulance Trusts

5.4 million population,
 £7.8 bn (€10.4 bn) annual spend by PCTs
 120,000 staff in NHS

Range from very urban to very rural (85% of population live in urban area)

Areas of high deprivation (particularly in Birmingham, the Black Country, Coventry and Stoke), but also very prosperous areas like Solihull, South Warwickshire & Vale of Evesham.



West Midlands

Overview of the West Midlands

- £8bn Revenue expenditure
- £280m Capital investment
- £1.5bn Hospital PFI
- £119m LIFT

NHS organisations:

- 19 Acute Trusts (incl 6 FTs)
- 6 Mental Health Trusts (incl 1 FT)
- 16 Primary Care Trusts
- 1 Care Trust (jointly providing health and social services)
- 1 Ambulance Trust.
- 1 Strategic Health Authority

In the average day in the WM the NHS

- Will spend £20M
- 126,000 staff will be employed
- 60,000 people will visit their GP practice
- 4,500 new referrals will be made
- 1,700 patients will have operations
- 5,000 people will attend A&E
- 2,000 people will call an ambulance

Why Bother?

*Health Supports Regeneration AND
Regeneration is key to Health*

Factors Affecting Health & Well Being

- Factors that can't be changed –age, gender, genes
- Social Factors – employment, poverty
- Environmental Factors - pollution, housing
- Lifestyle – exercise, diet
- Access – education, leisure, transport

Health Investment

Sandwell/City redevelopment

- £455M redevelopment
- Grove Lane site
- Complete in 2015



West Midlands

Health Investment

UHNS – Fit for the future

- £391M 2007-2014
- Health economy modernisation
- Replaces obsolete estate
- Regenerates local economy
- Creates employment
- Addresses poor health



West Midlands

Health Investment

Procurement

- Often difficult for UK suppliers
- Ongoing pressure to reduce costs
- Volumes favour larger companies
- Product approval tortuous – impedes innovation
- Significant scope to localise



West Midlands

Health Investment

Health Technology

- Medical Technology – priority for Economic Strategy
- Medilink – 615 Medical Technology companies plus 499 who are developing business
- Potential in translational research and trials
- SHA Duty to Innovate and Innovation Funds
- Telecare

Health Investment

Employment

- NHS employees 1 in 40 of the population
 - Skills pledge
 - Graduate talent pool
 - Para professional roles eg health trainers
- Health supports employment
- Ill-health is associated with unemployment
- Central to a healthy life
- Type of work is a factor mortality and morbidity is higher for employees that have limited self-direction and control
- Average employee sickness absence is 6.6 days



West Midlands

Public Health

- Mental Health disorders cost the economy £9Bn pa
IAPT 9,500 → 50,000 result 1,000 re-employed
- Tobacco consumption costs the economy £1.25Bn pa
 - Impact on the individual eg Job seekers allowance
£47.50 pw / 10 cigarettes per day £17.50 pw
- Prevention Market